



LEHAR



[www.dollarglobal.in](http://www.dollarglobal.in)





 **DOLLAR**  
ALWAYS

**LEHAR**

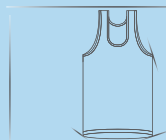
Dollar Lehar ensures comfort and flexibility. We have a premium range of mens innerwear, made from 100% cotton yarn with huge color variations. Dollar determines to deliver comfortable experience to the customers. The brand has

a strong presence across international retail chains and expanding market in the Middle East. Amongst country's top five hosiery undergarment manufacturers, Dollar owned it's presence due to the quality and comfortablity, which transformed Dollar into a leading light in the innerwear market.



### FINE RN LHVE 01

- |  |   |
|--|---|
| Made from 100% combed cotton processed for shrinkage control | 1 |
| Smart fit for flexibility and maximum freedom of movement    | 2 |



Itch-free fusing label 3

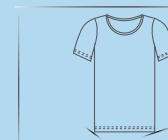
Available in other vibrant colours 4

Size XS S M L XL XXL 3XL 4XL  
Chest(cm) 75 80 85 90 95 100 105 110



### FINE RNS LHVE 02

- |   |   |
|---|---|
| 100% combed cotton processed for shrinkage control        | 1 |
| Smart fit for flexibility and maximum freedom of movement | 2 |



Itch-free fusing label 3

Sleeves provide style, coverage and functionality 4

Size XS S M L XL XXL 3XL 4XL  
Chest(cm) 75 80 85 90 95 100 105 110



## BRAVERI PARKER MEGA VEST LHVE 11

Made from 100% combed cotton  
processed for shrinkage control 1

Smart fit for flexibility and maximum  
freedom of movement 2



Itch-free fusing label 3

Available in other vibrant colours 4

Size XS S M L XL XXL 3XL 4XL  
Chest(cm) 75 80 85 90 95 100 105 110



## BRAVERI PARKER T-SHIRT LHVE 12

100% combed cotton processed  
for shrinkage control 1

Smart fit for flexibility and maximum freedom  
of movement 2



Itch-free fusing label 3

Sleeves provide style, coverage  
and functionality 4

Size XS S M L XL XXL 3XL 4XL  
Chest(cm) 75 80 85 90 95 100 105 110





## BRAVERI INTERLOCK MEGA VEST LHV 13

- |  |   |
|--|---|
| Made from 100% combed interlock fabric | 1 |
| Processed for shrinkage control        | 2 |



- |  |   |
|--|---|
| Smart fit for flexibility  | 3 |
| Seamless body construction   | 4 |
| Itch-free fusing label   | 5 |
| Exclusive tailoring for optimum support and fit                            | 6 |
| This range includes attractive flatlock stitches, folding and front pocket | 7 |

Size XS S M L XL XXL 3XL 4XL  
Chest(cm) 75 80 85 90 95 100 105 110



## BRAVERI INRETLOCK T-SHIRT LHV 14

- |  |   |
|--|---|
| Made from 100% combed interlock fabric | 1 |
| Processed for shrinkage control        | 2 |



- |  |   |
|--|---|
| Smart fit for flexibility  | 3 |
| Seamless body construction   | 4 |
| Itch-free fusing label   | 5 |
| Exclusive tailoring for optimum support and fit                            | 6 |
| This range includes attractive flatlock stitches, folding and front pocket | 7 |

Size XS S M L XL XXL 3XL 4XL  
Chest(cm) 75 80 85 90 95 100 105 110





## BRAVERI FINE MEGA VEST LHVE 09

- Made from 100% combed cotton processed for shrinkage control 1
- Smart fit for flexibility and seamless body construction 2



- Itch-free fusing label 3
- Reinforced shoulder seams 4
- Crew neck ideal for multipurpose use 5

Size	XS	S	M	L	XL	XXL	3XL	4XL
Chest(cm)	75	80	85	90	95	100	105	110



## BRAVERI FINE T-SHIRT LHVE 10

- Made from 100% combed cotton processed for shrinkage control 1
- Smart fit for flexibility and seamless body construction 2



- Itch-free fusing label 3
- Reinforced shoulder seams 4
- Crew neck ideal for multipurpose use 5

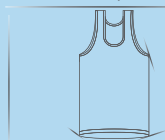
Size	XS	S	M	L	XL	XXL	3XL	4XL
Chest(cm)	75	80	85	90	95	100	105	110





### FINE D/F RN LHVE 03

- 1 Made from 100% combed cotton processed for shrinkage control
- 2 Smart fit for flexibility and seamless body construction



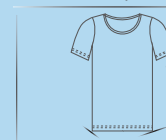
- 3 Itch-free fusing label
- 4 Reinforced shoulder seams

Size	XS	S	M	L	XL	XXL	3XL	4XL
Chest(cm)	75	80	85	90	95	100	105	110



### FINE D/F RNS LHVE 04

- 1 Made from 100% combed cotton processed for shrinkage control
- 2 Smart fit for flexibility and seamless body construction



- 3 Itch-free fusing label
- 4 Reinforced shoulder seams

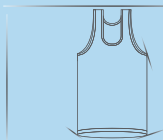
Size	XS	S	M	L	XL	XXL	3XL	4XL
Chest(cm)	75	80	85	90	95	100	105	110





## EGYPTIAN VEST RN LHVE 07

- |                                 |   |
|---------------------------------|---|
| Made from 100% Egyptian cotton  | 1 |
| Processed for shrinkage control | 2 |



- |                            |   |
|----------------------------|---|
| Smart fit for flexibility  | 3 |
| Seamless body construction | 4 |
| Itch-free fusing label     | 5 |
| Reinforced shoulder seams  | 6 |

Size	XS	S	M	L	XL	XXL	3XL	4XL
Chest(cm)	75	80	85	90	95	100	105	110

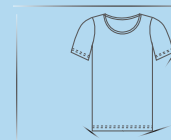


WHITE



## EGYPTIAN VEST RNS LHVE 08

- |                                 |   |
|---------------------------------|---|
| Made from 100% Egyptian cotton  | 1 |
| Processed for shrinkage control | 2 |



- |                            |   |
|----------------------------|---|
| Smart fit for flexibility  | 3 |
| Seamless body construction | 4 |
| Itch-free fusing label     | 5 |
| Reinforced shoulder seams  | 6 |

Size	XS	S	M	L	XL	XXL	3XL	4XL
Chest(cm)	75	80	85	90	95	100	105	110

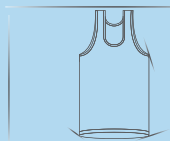


WHITE



## FINE RN LHVE 01

- 1 Made from 100% combed cotton processed for shrinkage control
- 2 Smart fit for flexibility and maximum freedom of movement



Itch-free fusing label 3

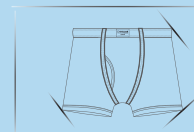
Available in other vibrant colours 4

Size XS S M L XL XXL 3XL 4XL  
Chest(cm) 75 80 85 90 95 100 105 110



## LONG TRUNK (U/E) LHTR 05

- 1 100% combed cotton fabric
- 2 Contoured legs don't ride up
- 3 Superior fit
- 4 Wonderfully tag free with super-soft fabric



Plush-backed waistband which is soft against the skin 5

Contoured pouch for extra absorbency 6

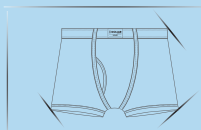
Functional fly front 7

Size XS S M L XL XXL 3XL 4XL  
Waist(cm) 75 80 85 90 95 100 105 110



## MINI TRUNK U/E LHTR 01

- |   |   |
|---|---|
| Made from premium combed cotton                 | 1 |
| Modern fit                                      | 2 |
| Double layered contoured pouch with fly opening | 3 |



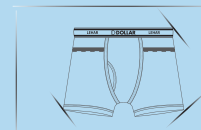
- |                                   |   |
|-----------------------------------|---|
| Low rise with square cut styling  | 3 |
| Durable and soft fabric waistband | 4 |

Size XS S M L XL XXL  
Waist(cm) 75 80 85 90 95 100



## FINE POCKET TRUNK LHTR 04

- |                                   |   |
|-----------------------------------|---|
| Super soft 100% combed cotton     | 1 |
| Interlock knit for stretchability | 2 |
| Contoured pouch for support       | 3 |



- |   |   |
|---|---|
| Stylish, long-lasting snug fit                  | 4 |
| Functional fly front                            | 5 |
| Signature waistband for comfortable grip        | 6 |
| Two additional front pockets for extra security | 7 |

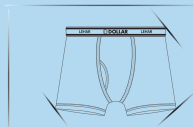
Size XS S M L XL XXL 3XL 4XL  
Waist(cm) 75 80 85 90 95 100 105 110





## INTERLOCK TRUNK (SCD) LHTR 02

- |                                   |   |
|-----------------------------------|---|
| Super soft 100% combed cotton     | 1 |
| Interlock knit for stretchability | 2 |
| Contoured pouch for support       | 3 |



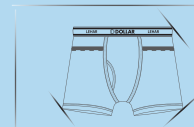
- |  |   |
|--|---|
| Stylish, long-lasting snug fit           | 4 |
| Functional fly front                     | 5 |
| Signature waistband for comfortable grip | 6 |

Size XS S M L XL XXL 3XL 4XL  
Waist(cm) 75 80 85 90 95 100 105 110



## INTERLOCK POCKET TRUNK (SPCD) LHTR 05

- |                                   |   |
|-----------------------------------|---|
| Super soft 100% combed cotton     | 1 |
| Interlock knit for stretchability | 2 |
| Contoured pouch for support       | 3 |



- |   |   |
|---|---|
| Stylish, long-lasting snug fit                  | 4 |
| Functional fly front                            | 5 |
| Signature waistband for comfortable grip        | 6 |
| Two additional front pockets for extra security | 7 |

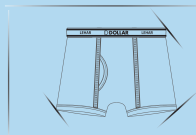
Size XS S M L XL XXL 3XL 4XL  
Waist(cm) 75 80 85 90 95 100 105 110



## LONG TRUNK (T/E)

### LHTR 06

- |  |   |
|--|---|
| Classic trunk styling with longer leg length | 1 |
| Made with super soft 100% combed cotton      | 2 |
| A fit that moves with you                    | 3 |



- |   |   |
|---|---|
| Double layered contoured pouch for extra absorbency     | 4 |
| Functional fly front                                    | 5 |
| A premium signature waistband for soft, all day comfort | 6 |

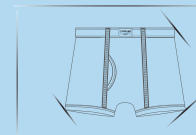
Size S M L XL  
Waist(cm) 60 65 70 73



## LONG TRUNK (U/E)

### LHTR 05

- |  |   |
|--|---|
| Classic trunk styling with longer leg length | 1 |
| Made with super soft 100% combed cotton      | 2 |
| A fit that moves with you                    | 3 |



- |   |   |
|---|---|
| Double layered contoured pouch for extra absorbency     | 4 |
| Functional fly front                                    | 5 |
| A premium signature waistband for soft, all day comfort | 6 |

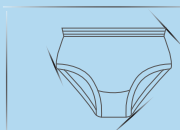
Size S M L XL  
Waist(cm) 60 65 70 73



## PLAIN PANTY LHPT 01

Made from 100% super  
combed cotton 1

Inner elasticity for  
waistline comfort 2



Available in exotic colors 3

Keeps coolness flowing  
through you 4

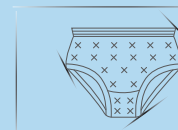
Size XS S M L XL XXL 3XL 4XL  
Waist(cm) 75 80 85 90 95 100 105 110



## PRINTED PANTY LHPT 01

Made from 100% super  
combed cotton 1

Inner elasticity for  
waistline comfort 2



Available in exotic colors 3

Keeps coolness flowing  
through you 4

Size XS S M L XL XXL 3XL 4XL  
Waist(cm) 75 80 85 90 95 100 105 110

